





Mechanisms / 机构

	TFU-7.5
	7,5 kW
0 ⇔ 94 m/min	

	SFU-7.5
	2x 7,5 kW
0 ⇔ 0,7 rpm	

	RT-7.5
	2x 75 Nm
	20 m/min
	3XR52 5XR72

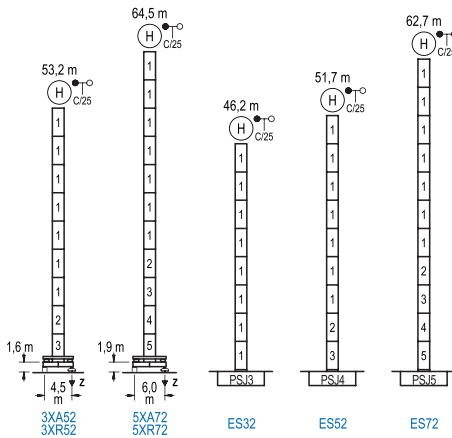
	RT-7.5VC	*
	2x 75 Nm	
	20 m/min	
	5XR72	

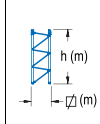
POWER / 功率				Operating voltage / 工作电压	Generator / 发电机
Hoist / 起升机构	Trolley / 变幅机构	Slewing / 回转机构	Travel / 行走机构		
HFU2-37-25	TFU-7.5	(2x) SFU-7.5	(2x) RT-7.5	400 V 3ph 50 Hz	115 kVA
HFU2-45-25					140 kVA

Optional 选项
*

Heights Under Hook / 吊钩以下高度

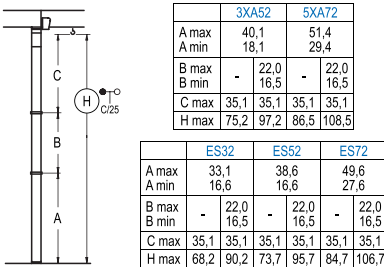
∅ 2,0 m



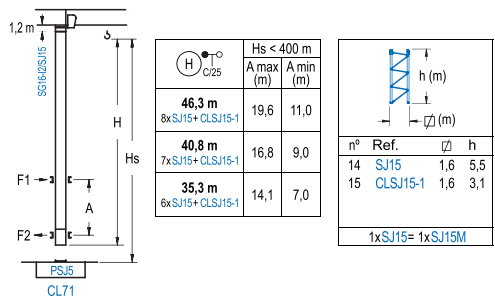
	n°	Ref.	∅	h
	1	SJ23	2,0	5,5
	2	TSJ24	2,0	5,5
	3	SJ24	2,0	5,5
	4	TSJ25	2,0	5,5
	5	SJ25	2,0	5,5
1xSJ25= 1xSJ25M				

R max. 最大压力	In operation 工作状态	3XR52.....88 t 5XR72.....88 t
	Out of service 非工作状态	3XR52.....100 t 5XR72.....133 t

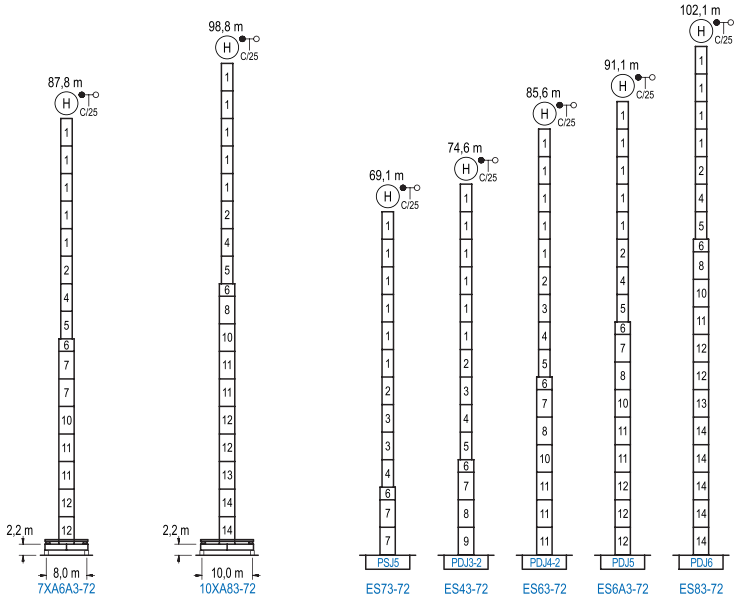
Braced crane / 外附着塔机



Internal Climbing Crane / 内爬塔机



Other wind zones or additional hook heights on request
其他风区或另外的吊钩高度请咨询



n°	Ref.	Ø		n°	Ref.	Ø		n°	Ref.	Ø		n°	Ref.	Ø	
		h	h			h	h			h	h			h	h
1	SJ23	2,0	5,5	4	TSJ25	2,0	5,5	7	SJ35	2,5	5,5	11	DJ34	2,5	5,5
2	TSJ24	2,0	5,5	5	SJ25	2,0	5,5	8	TDJ33A	2,5	5,5	12	DJ35	2,5	5,5
3	SJ24	2,0	5,5	6	TMSJ35S, J25	2,5	1,0	9	DJ33	2,5	5,5	13	TDJ36B	2,5	5,5
1xSJ25=1xSJ25M								10	TDJ34	2,5	5,5	14	DJ36	2,5	5,5

Other wind zones or additional hook heights on request
其他风区或另外的吊钩高度请咨询